

Rockschool Debut Piano Questions

1: Harmony

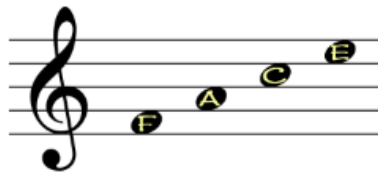
The Examiner will point out a chord within your chosen piece.
You will be asked to identify whether it is major or minor.

Answer: If it is just a letter then it is major and if it has an 'm' after the capital letter, then it is minor

2: Melody

The examiner will point to a **treble clef** pitch within the chosen piece.
You will be asked to identify the pitch of the note

Useful to remember:



3: Rhythm

The examiner will point to a note within the piece.
You will be asked to identify the note value.



Crotchet

1 beat



Dotted
Crotchet

3 quavers



Quaver

1/2 beat



Pair of
Quavers

1 beat (total)



Minim

2 beats



Dotted
Minim

3 beats



Semibreve

4 beats

4: Technical

The examiner will point to a **crotchet length** phrase, played by either the left or right hand.
You will be asked to describe the fingering used (demonstrations are acceptable).

Answer: Say or show which fingers you use on which notes and whether you need to move positions etc.

5: Genre

You will be asked to identify the genre of your chosen piece:

One of these:

Next To Me - *R&B/Soul/Gospel*

Imagine - *Rock/Pop*

Beauty and the Beast - *Showtune/Soundtrack*

Lean On Me - *Soul*

Love Yourself - *Acoustic Pop*

La Valse d'Amélie - *Avant-Garde/Bal-Musette/Contemporary Classical*