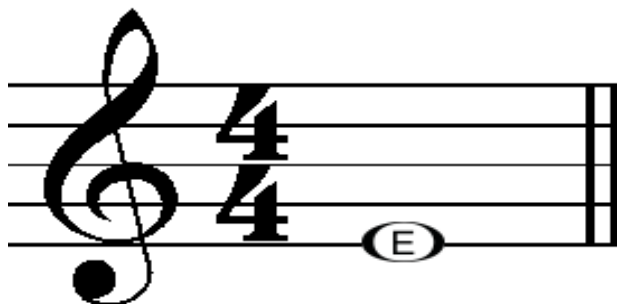


# Unit 4 – Melodies Using C, D and E

The note E is written on the first line of the staff and uses the third finger on the right hand.



Write the note names as fast as you can, on top of these notes.

## Wild West

4 C G C G C

10 G C G C C G C

16 G C G C G

20 C 2

# Techno Party

4 C G C G C

10 G C C G C G

17 C G C G C G C

24 G C C C

28

# Really Hot Cross Buns

5 C G C C G C C G

12 C G C C G C C G C C

19 G C G C

## Three Note Foxtrot

4 C G C G C C G

10 C G G C C G C G

16 C C G C C C G C G

22 C G C C G C

27 G C G C

4

## Reggae, Reggae

4 C G C

9 C G C C

14 C G C C C

19 D C

2



## Improvisation

Ask your teacher to keep playing these bars while you make up a tune using all of the notes you know.

Musical notation for improvisation exercise in 4/4 time. The top staff (treble clef) shows a sequence of chords: C4, D4, E4, F4, G4, A4, B4, C5. The bottom staff (bass clef) shows a sequence of chords: C4, D4, E4, F4, G4, A4, B4, C5. The notation includes a key signature of one flat (Bb) and a 4/4 time signature. The exercise consists of two measures, each with a repeat sign at the end.

## Three Note Hoedown

Musical notation for 'Three Note Hoedown' in 4/4 time. The piece consists of five staves of music. The first staff starts with a 4-measure rest, followed by a repeat sign. The second staff has a 10-measure rest, followed by a repeat sign. The third staff has a 15-measure rest, followed by a repeat sign. The fourth staff has a 21-measure rest, followed by a repeat sign. The fifth staff has a 27-measure rest, followed by a 2-measure rest, and then a repeat sign. The notation includes a key signature of one flat (Bb) and a 4/4 time signature. Chord symbols C, G, and C are placed above the notes in the first, second, and fourth staves.

4 C G C C C C G

12 C C C C G G C

21 C C C C G G C C

30 G C C C C D C C

39 C C C C G C

46 C C C G G C

53 6